

**vtech**<sup>®</sup>

User's Manual

# Soothing Ocean Slumbers Mobile™



© 2012 VTech  
Printed in China  
91-002761-001 US

Dear Parent,

Ever notice the look on your baby's face when they learn something new through their own discovery? These self-accomplished moments are a parent's greatest reward. To help fulfill them, **VTech**<sup>®</sup> created the **Infant Learning**<sup>®</sup> series of toys.

These unique interactive learning toys directly respond to what children do naturally – play! Using innovative technology, these toys react to baby's interactions, making each play experience fun and unique as they learn age-appropriate concepts like first words, numbers, shapes, colors and music. More importantly, **VTech**<sup>®</sup>'s **Infant Learning**<sup>®</sup> toys develop baby's mental and physical abilities by inspiring, engaging and teaching.

At **VTech**<sup>®</sup>, we know that a child has the ability to do great things. That's why all of our electronic learning products are uniquely designed to develop a child's mind and allow them to learn to the best of their ability. We thank you for trusting **VTech**<sup>®</sup> with the important job of helping your child learn and grow!

Sincerely,

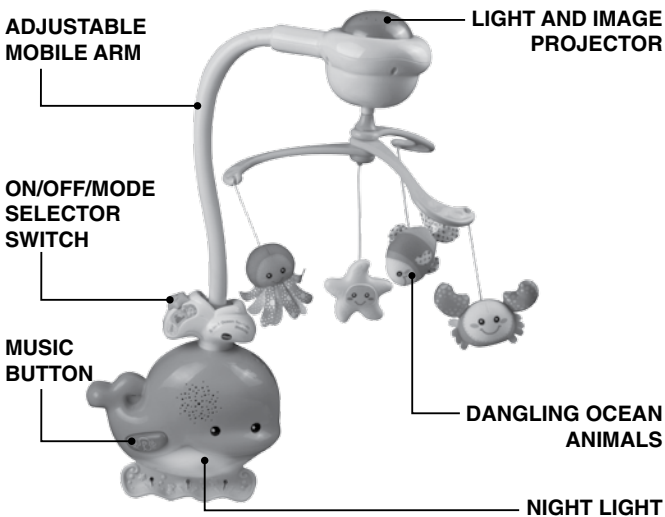
Your friends at **VTech**<sup>®</sup>

To learn more about the **Infant Learning**<sup>®</sup> series and other **VTech**<sup>®</sup> toys, visit [www.vtechkids.com](http://www.vtechkids.com)

# INTRODUCTION

Thank you for purchasing the **VTech® Soothing Ocean Slumbers Mobile™** learning toy.

Your child will be lulled to sleep with the **VTech® Soothing Ocean Slumbers Mobile™**. Designed to grow with your child, this 2-in-1 mobile will delight your little one from infancy through their toddler years. Your newborn will watch and listen in wonder as the colorful ocean animals twirl to peaceful music while a calming image is projected onto the ceiling. As your baby grows, the mobile arm can be removed as it converts to a crib toy and light projector.



# INCLUDED IN THIS PACKAGE

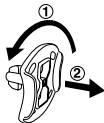
- One VTech® Soothing Ocean Slumbers Mobile™
- One instruction manual
- Four dangling ocean animals
- One mobile arm

**WARNING:** All packing materials, such as tape, plastic sheets, wire ties and tags are not part of this toy, and should be discarded for your child's safety.

**ATTENTION !** Pour la sécurité de votre enfant, débarrassez-vous de tous les produits d'emballage tels que rubans adhésifs, feuilles de plastique, attaches et étiquettes. Ils ne font pas partie du jouet.

**NOTE:** Please keep this instruction manual as it contains important information.

**Unlock the packaging locks:**

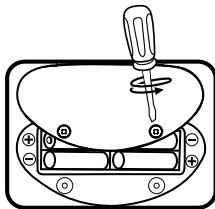


- ① Rotate the packing locks 90 degrees counter-clockwise
- ② Pull out the packing locks.

## GETTING STARTED

### BATTERY INSTALLATION

1. Make sure the unit is turned **OFF**.
2. Locate the battery cover on the back of the unit. Use a coin or a screwdriver to loosen the screw.
3. Install 4 new 'AA' (UM-3/LR6) batteries following the diagram inside the battery box.
4. Replace the battery cover and tighten the screw to secure the battery cover.



Included In This Package

## BATTERY NOTICE

- Use new alkaline batteries for maximum performance.
- Use only batteries of the same or equivalent type as recommended.
- Do not mix different types of batteries: alkaline, standard (carbon-zinc) or rechargeable (Ni-Cd, Ni-MH), or new and used batteries.
- Do not use damaged batteries.
- Insert batteries with the correct polarity.
- Do not short-circuit the battery terminals.
- Remove exhausted batteries from the toy.
- Remove batteries during long periods of non-use.
- Do not dispose of batteries in fire.
- Do not charge non-rechargeable batteries.
- Remove rechargeable batteries from the toy before charging (if removable).
- Rechargeable batteries are only to be charged under adult supervision.

## DEMO TAG

The demo tag should be removed automatically when the product is taken out of the packaging. If the demo tag is still in position, please remove the plastic strip from the back of the product before placing in the crib. This will activate normal play.

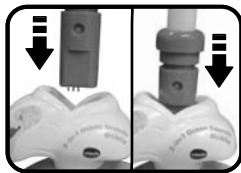
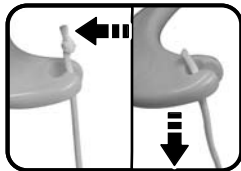
- Keep the mobile out of baby's reach. To avoid entanglement injuries, please remove the mobile portion from the crib once baby begins sitting or pushing up on all fours.
- Mobile age grade is Birth to 5 months
- The crib mobile is intended for visual stimulation and is not intended to be grasped by a child.
- Always attach all provided fasteners (strings, straps, clamps, etc.) tightly to a crib or playpen according to the instructions. Check frequently. Attach only to cribs with sturdy rails and spindles. Do not attach to playpens with mesh walls.

- Do not add additional strings or straps to attach to a crib or playpen.
- To ensure your child's safety, the product should be assembled by an adult.
- Make sure the crib attachment straps are out of child's reach.
- When removing the **VTech® Soothing Ocean Slumbers Mobile™** from the crib, please detach the crib attachment straps from the unit and keep the straps out of child's reach.

With the **VTech® Soothing Ocean Slumbers Mobile™** safety comes first. To ensure your child's safety, adult assembly is required.

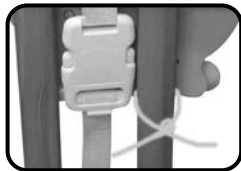
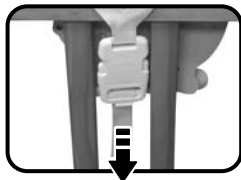
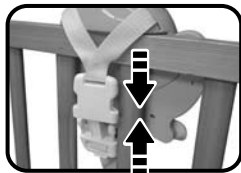
## MOBILE ASSEMBLY

1. To attach the dangling ocean animals to the mobile, thread the cord from one of the dangling ocean animals into the slot on the mobile arm (the knot in the cord should be above the slot). Repeat this procedure to attach the remaining dangling ocean animals.
2. Attach the bottom of the mobile arm into the recessed slot on the top of the activity panel. You will hear a click when the post is inserted correctly.



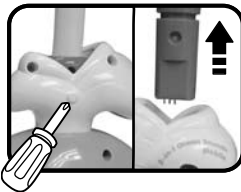


3. Position the whale so it is facing into the crib. Rest the recessed part of the whale along the top crib rail, with the crib attachment strap over the crib rail. Thread the bottom of the crib attachment strap through one of the spindles. Buckle the two clips together until you hear them click.
4. Tighten the crib attachment straps so they are secured tightly to the crib. Pull on the crib attachment strap to tighten the hold. To loosen the strap, pull on the bottom clip.
5. Tie the string to the nearest spindle.



## CRIB LIGHT ASSEMBLY

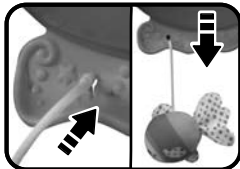
1. When your child has outgrown the mobile portion of the product, you can convert the product to a night light. Remove the mobile arm from the product. Use a small screwdriver to press the release button on the back of the water spout. While pressing the release button, pull up on the mobile post.



2. Remove the dangling ocean animals from the mobile.



3. To attach the dangling ocean animals to the crib light, thread the knot in the cord of one of the dangling ocean animals into one of the slots in the waves below the whale. Slide the cord down so the knot is resting in the narrowest part at the bottom of the slot. Repeat this procedure to attach the remaining dangling ocean animals.



## PRODUCT FEATURES

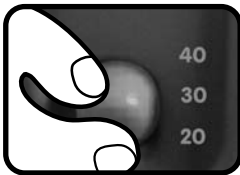
### 1. ON/OFF/MODE SELECTOR SWITCH

To turn the unit **ON**, slide the **ON/OFF/MODE SELECTOR SWITCH** to the **NATURE MODE** (🐠) or **MUSIC MODE** (🎵) position. To turn the unit **OFF**, slide the **ON/OFF/MODE SELECTOR SWITCH** to the **OFF** position.



### 2. TIME SELECTOR SWITCH

Slide the **TIME SELECTOR SWITCH** to the **20, 30 or 40 minute position** to choose the corresponding time setting.





### 3. LIGHT/MOTOR CONTROL SWITCH

Slide the **LIGHT/MOTOR CONTROL SWITCH** to select the desired setting.



### 4. VOLUME CONTROL

Press the **VOLUME + BUTTON** to increase the volume or press the **VOLUME - BUTTON** to reduce the volume.

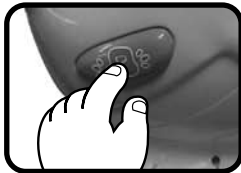


### 5. AUTOMATIC SHUT-OFF

To preserve battery life, the **VTech® Soothing Ocean Slumbers Mobile™** will automatically power-down after the selected time has ended. The unit can be turned on again by pressing any button or when the sound sensor detects baby's cry.

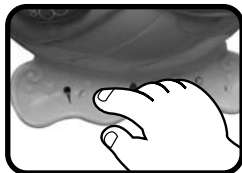
## ACTIVITIES

1. Slide the **on/off/mode selector switch** to turn the unit on. You will hear the music play for the duration of selected time setting.
2. Press the **music button** to change the melody, sing-along song or sound that is currently playing.





3. Press the **wave button** to hear a sound play over the sing-along song or melody.



## MELODY LIST

1. Rock-a-bye Baby
2. Dream of a Summer Night - Mendelssohn
3. Badinerie - Bach
4. Beautiful Dreamer
5. Bicycle Built for Two
6. Happy Farmer - Schumann
7. Frère Jacques
8. Au Clair de la lune
9. Hugarian Dances - Brahms
10. Lullaby - Brahms
11. Menuet - Mozart
12. Fur Elise - Beethoven
13. Home Sweet Home
14. Jesu, Joy of Man's Desiring - Bach
15. Greensleeves - Mozart
16. Lavender's Blue
17. New World Symphony - Dvorak
18. Morning (Peer Gynt Suite) - Grieg
19. Cradle Song - Mozart
20. All through the Night
21. Spring Song - Mendelssohn
22. To a Wild Rose - MacDowell
23. A-Tisket, A-Tasket



24. Humpty Dumpty
25. Three Little Kittens
26. Pop! Goes the Weasel
27. Bear Went Over the Mountain
28. Serenade - Haydn
29. Jack and Jill
30. Ode to Joy - Beethoven
31. Oh Where Has My Little Dog Gone?
32. Old King Cole
33. Little Boy Blue
34. Minuet - Boccherini
35. Jack Be Nimble
36. London Bridge
37. Air - Bach

## SUNG SONG LYRICS

### SONG 1

The ocean is still,  
The animals are asleep.  
Lay your head down,  
It's time for you to rest.

### SONG 2

Go to sleep my baby,  
Sleep well, safe and sound.  
Sweet dreams I wish for you,  
Your sea friends all around.

### SONG 3

Twinkle, twinkle, little star,  
How I wonder what you are?  
Up above the world so high,  
Like a diamond in the sky.  
Twinkle, twinkle, little star,  
How I wonder what you are?



# CARE & MAINTENANCE

1. Keep the unit clean by wiping it with a slightly damp cloth.
2. Keep the unit out of direct sunlight and away from any direct heat source.
3. Remove the batteries when the unit will not be in use for an extended period of time.
4. Do not drop the unit on hard surfaces and do not expose the unit to moisture or water.

# TROUBLESHOOTING

If for some reason the program/activity stops working or malfunctions, please follow these steps:

1. Please turn the unit **OFF**.
2. Interrupt the power supply by removing the batteries.
3. Let the unit stand for a few minutes, then replace the batteries.
4. Turn the unit **ON**. The unit should now be ready to play again.
5. If the product still does not work, replace with an entire set of new batteries.

If the problem persists, please call our Consumer Services Department at 1-800-521-2010 in the U.S. or 1-877-352-8697 in Canada, and a service representative will be happy to help you.

For information on this product's warranty, please call **VTech®** at 1-800-521-2010 in the U.S. or 1-877-352-8697 in Canada.

**IMPORTANT NOTE:**  
Creating and developing Infant Learning products is accompanied by a responsibility that we at **VTech®** take very seriously. We make every effort to ensure the accuracy of the information, which forms the value of our products. However, errors sometimes can occur. It is important for you to know that we stand behind our products and encourage you to call our Consumer Services Department at 1-800-521-2010 in the U.S. or 1-877-352-8697 in Canada, with any problems and/or suggestions that you might have. A service representative will be happy to help you.

Care & Maintenance/Troubleshooting



## FCC Information:

This equipment has been tested and found to comply with the limits for a Class B digital device, pursuant to Part 15 of the FCC Rules. These limits are designed to provide reasonable protection against harmful interference in a residential installation. This equipment generates, uses and can radiate radio frequency energy and, if not installed and used in accordance with the instructions, may cause harmful interference to radio communications. However, there is no guarantee that interference will not occur in a particular installation. If this equipment does cause harmful interference to radio or television reception, which can be determined by turning the equipment off and on, the user is encouraged to try to correct the interference by one or more of the following measures:

- Reorient or relocate the receiving antenna
- Increase the separation between the equipment and receiver
- Connect the equipment into an outlet on a circuit different from that to which the receiver is connected
- Consult the dealer or an experienced radio/TV technician for help

**Caution:** Changes or modifications not expressly approved by the party responsible for compliance could void the user's authority to operate the equipment.

THIS DEVICE COMPLIES WITH PART 15 OF THE FCC RULES. OPERATION IS SUBJECT TO THE FOLLOWING TWO CONDITIONS: (1) THIS DEVICE MAY NOT CAUSE HARMFUL INTERFERENCE, AND (2) THIS DEVICE MUST ACCEPT ANY INTERFERENCE RECEIVED, INCLUDING INTERFERENCE THAT MAY CAUSE UNDESIRE OPERATION.

THIS CLASS B DIGITAL APPARATUS COMPLIES WITH CANADIAN ICES-003.

CET APPAREIL NUMÉRIQUE DE LA CLASSE B EST CONFORME À LA NORME NMB-003 DU CANADA.

